

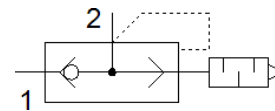
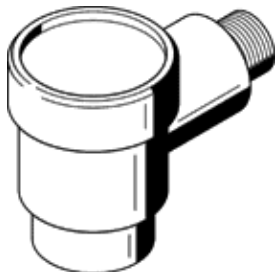
# quick exhaust valve SEU-1/4

Part number: 6753

FESTO

With built-in silencer.

The exhaust noise level is measured at 6 bar to atmosphere at 1 m distance.



## Data sheet

Feature	Value
Valve function	Quick exhaust
Pneumatic connection, port 1	G1/4
Pneumatic connection, port 2	G1/4
Mounting type	Threaded
Standard nominal flow rate, exhaust	1,100 l/min
Standard flow rate for exhaust 6->0 bar	2,300 l/min
Standard nominal flow rate for pressurisation 6->5 bar	960 l/min
Operating pressure	0.5 ... 10 bar
Ambient temperature	-20 ... 75 °C
Material housing	Zinc die-casting
Operating medium	Compressed air in accordance with ISO8573-1:2010 [7:-:-]
Nominal size	7 mm
Assembly position	Any
Note on operating and pilot medium	Lubricated operation possible (subsequently required for further operation)
Medium temperature	-20 ... 75 °C
Sound pressure level	85 dB(A)
Product weight	120 g
Material seals	NBR